

Customer :

customer

Customer part :

customer part

Comment :

Comment

S1=0.73

S2=12.23

Tmax=441

Tp S2=480.0

PI=0.06

HI=241

Sample =9107

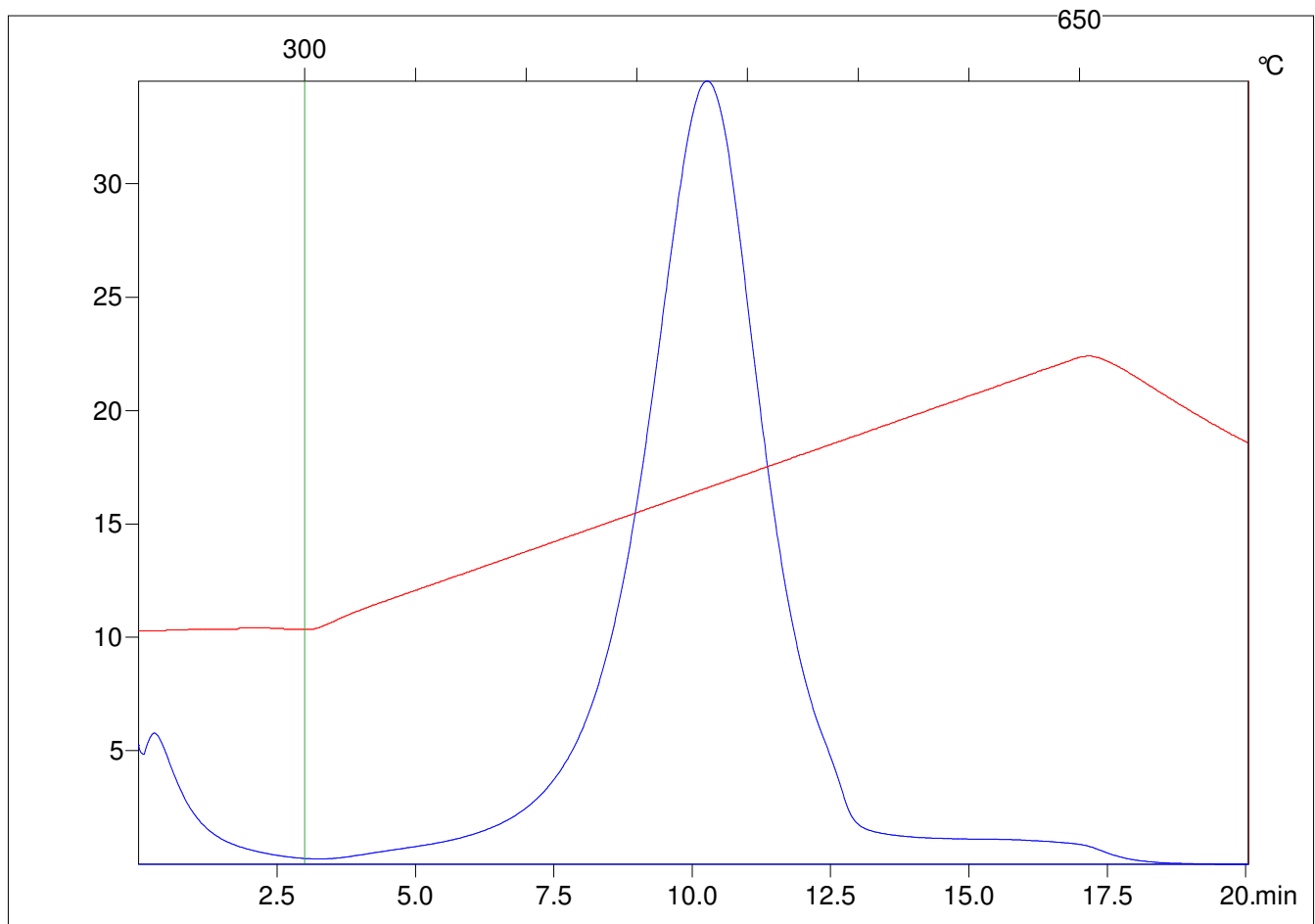
Method =Bulk Rock

Cycle=Basic

KFID(10\*9)=1444

Qty =70.5

TOC=5.07



C:\VINC\PK1\_1792\PK030.R00 : FID pyrolysis graphic

State

Pyro Status

Oxi Status